

IBEW LOCAL UNION NO. 20

Volume 10 Issue 1

January 15, 2015

684 W. Tarrant Rd.
Grand Prairie, Texas 75050

Telephone: 972-263-1122

Toll Free Number: 1-855-263-1112

Fax Number: 972-263-1112

A Message from Karsten Frentrup Business Manager/Financial Secretary

Dear Brothers and Sisters:

I hope everyone had a safe and fun New Years celebration. Now we say goodbye to 2014 and welcome 2015. Each new year brings with it new possibilities and lays behind it a new layer of history – so, on page 2 is a Historical Chart tracing the Local Unions that eventually become IBEW Local Union 20.

We would like to recognize and congratulate the newest group of Journeyman Inside Wireman to complete the Apprenticeship Program: Mario Alarcon, Clay Ciesynski, Eva Haraldsdottir, Edgar Jimenez, Brian Mansfield, Vincent Trujillo, Price Warwick III and Chad White.

Please save Saturday, May 30, 2015 for the 3rd Annual IBEW Local Union 20 Spring Picnic.

January 7th, 2015, we received the letter from the International Office approving the Bylaws Changes voted in by the Membership on November 11, 2014. The Inside Journeyman should notice a reduction of working assessments.

Let 2015 be the year of self improvement: For those interested in taking Advanced Journeyman Classes, be sure to check the J.A.T.C.'s website at www.ntejatc.org. The school offers classes for annual license renewal and Cable Splicing, Motor Controls, Master's License Prep (Advanced Code Study Levels 1 and 2), as well as other courses for Construction Wiremen and Construction Electricians such as Blueprint Reading / Branch Circuits, Transformers and Motors, Motor Controls, Electrical Job Safety / OSHA, History and Agreements, National Electrical Code / Codeology.

QUEST has also funded courses For NFPA70e Certification and Estimating Courses. There are currently 10 seats left for the NFPA70e course that will take place on January 23rd and 24th. Those interested in participating in this class should call the NECA office at 817-633-3332.

In July, 2012, LU 20 changed the way it offers the door prize for the Inside Monthly Meeting. We began that month drawing from a box containing every Inside Member's card number printed on a card. If the member is present, he or she will win the accumulated prize. If the member who holds the card number drawn is not present, the accumulated prize grows by the original monthly door prize amount (\$36). The door prize for February will be \$1,116. I'm sure you've heard the saying "You can't win if you don't play," well, it costs you nothing but your presence at the meeting to play. Hope to see you there.

Lastly, the 6th District International Executive Council member Joe Smith, formerly the Business Manager/Financial Secretary of Oklahoma City L.U. 1141, resigned his IEC office to take a position as an International Representative. International President Ed Hill then appointed Austin, TX L.U. 520 Business Manager, Chris Wagner, to the vacated IEC office. (While Local Union 20 is part of the IBEW 7th District, it is represented by the 6th District of the International Executive Council).

Bus. Mgr./Fin. Sec.

Karsten Frentrup

President

Michael Partridge

Vice President

Mitch Burchfield

Treasurer

Michael Bradshaw

Recording Secretary

Walter E. Maultsby

Executive Board Members

Chairman—Randy Slagle,
Tony Lindeman, Pat Jolly,
Mike Morley, Lyndon Hanson,
Freddie Lopez and Mark R. Jones

Asst. Business Managers

Ricky Foreman
Phillip Parker
Reggie Salazar
Price Warwick, Jr.

Organizers

Adrian Cepeda

Administrative Assistants

Linda Madden
Linda Rutherford
Angie Whorton

INSIDE THIS ISSUE

Pg. 1 Message from B.A.

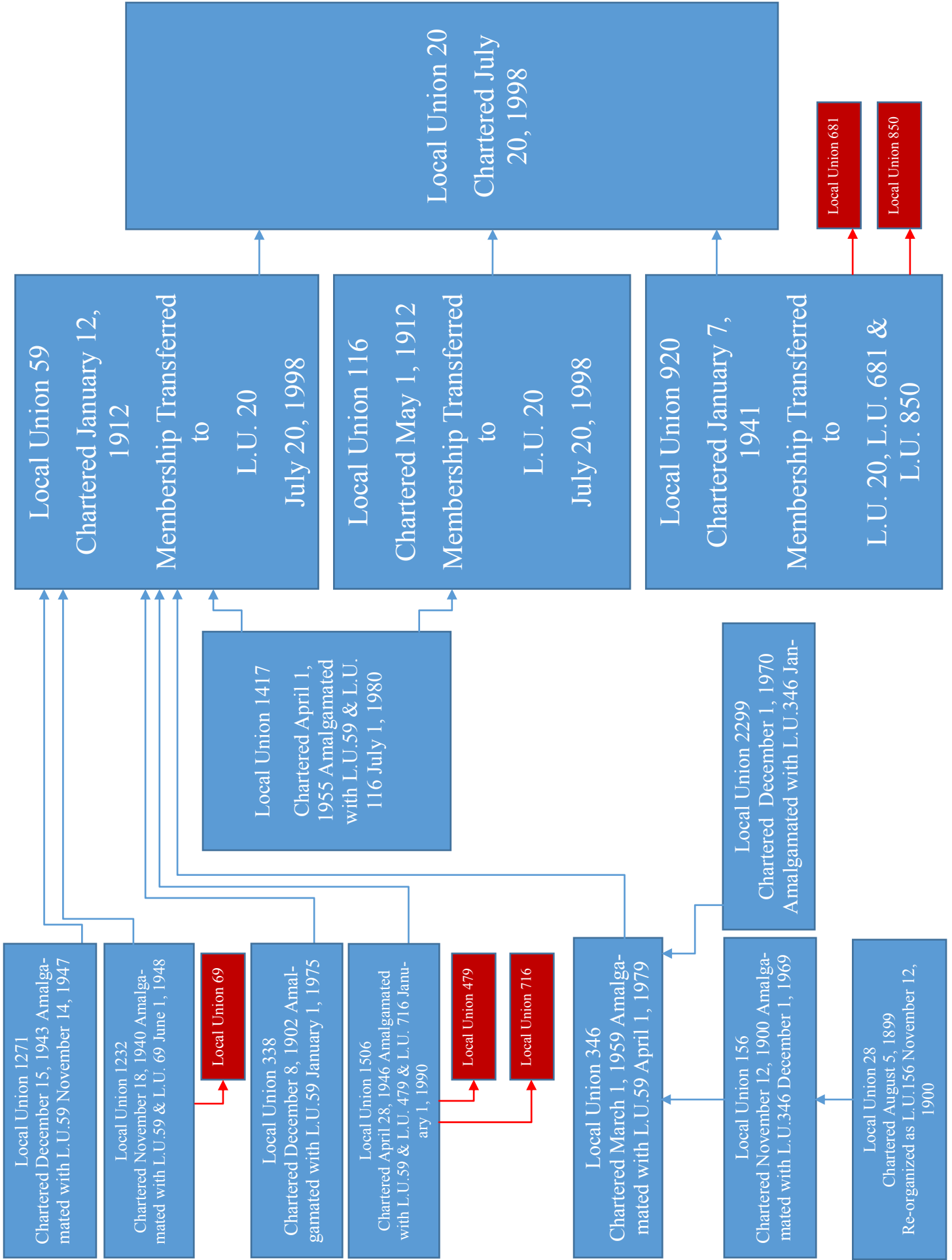
Pg. 2 Historical Chart

Pg. 3 Pension Applicants,
Sick and Injured
Deceased Members
Births

Pg. 4 D/FW Retiree's
Luncheon
"Has Been Club"
Message
Important Reminders

Pg. 5 Helpful Phone
Numbers

HISTORICAL CHART



PENSION APPLICANTS

Listed are members who have applied for their IBEW Pension applications that were approved at the November and December, 2014 General Membership Meetings. They are:

Don Bruce Brashier, Walter D. Johnson, William P. Lenhart, Jr., David E. Strickland and Lloyd Shipley

Thank you all for your many years of service and dedication to the IBEW.

We wish you all the best and may you remain in good health to enjoy many years of retirement.

SICK AND INJURED LIST

We wish a speedy recovery to those members listed below.

Rusty Mahaffey and David Bryant

If you want to be added, or know of a member to add to this list, call the Local 20 Business Office and let us know.

DECEASED MEMBERS

We would like to express our deepest sympathy to the family and friends of those members we have lost.

The last Death Benefit posted in our October, 2014 newsletter was DB# 505.

Non Participant	Charles E. Wood, (FW)	Passed away 8/9/2014	35 year member
DB #506	Patrick C. Wheeler, (D)	Passed away 7/6/2014	23 year member
DB #507	Melvin V. Fain, (D)	Passed away 11/5/2014	52 year member
DB #508	Wesley P. Banks, (FW)	Passed away 11/19/2014	61 year member
DB #509	Kerry G. Christian, (D)	Passed away 11/11/2014	31 year member
DB #510	B. E. Burnett, (D)	Passed away 12/2/2014	66 year member
DB #511	Charles B. Freeman, (D)	Passed away 12/8/2014	35 year member
DB #512	Jefferson F. Isbell, (FW)	Passed away 12/15/2014	45 year member
DB #513	William A. Muller, (D)	Passed away 12/15/2014	64 year member
DB #514	Jerry D. Ashford, Sr., (D)	Passed away 12/23/2014	60 year member
DB #515	Frank Loza, (D)	Passed away 12/28/2014	42 year member
DB #516	Thomas R. Webb, (D)	Passed away 12/28/2014	19 year member
Non Participant	J. D. Rogers, (FW)	Passed away 11/14/2014	67 year member

Also, we want to express our sympathy to those members who have lost a loved one.

Donald K. Rogers lost his wife. (No other info. provided).

Albert "Sleepy" Dillard, lost his wife, Anita Dillard on 11/11/2014.

Malcolm Moulton lost his mother, Marilyn Moulton on 1/7/2014.

BIRTH ANNOUNCEMENTS

Congratulations to Justin Dodson and Courtney Cole, who are proud to announce the arrival of their son, Jaxsen Louis Dodson. Jaxsen was born on 10/22/2014, weighing in at 9 lbs. 11 oz. and was 19¾ in. long.

RETIRED MEMBERS LUNCHEON

FORT WORTH RETIRED MEMBERS: The Fort Worth Retired Members will meet at the IBEW 116 FCU, located at 603 S. Adams in Fort Worth, TX. (corner of S. Adams and Pennsylvania), on the 1st Tuesday of each month at 12:00 Noon. Come at 11:00 AM if you want to play dominos. Lunch is at The Rose Bud at 1:30 PM. If you need more information, call Tooter Mills at 817-292-9727.

DALLAS RETIRED MEMBERS: The "Has Been Club" of IBEW Retired Members are meeting at 11:30 AM on the third Wednesday of each month at Los Rancheros Restaurant, at 2224 Gus Thomasson Rd., Dallas, Tx. For more information, please call or e-mail James Creech at 972-279-7606, e-mail address is : jimdandy602@yahoo.com.

OCTOBER NEWS FROM THE "HAS BEEN CLUB"

By: James Creech, Retired Member

Sorry I missed the September meeting. Had an appointment at the VA. But my usual great impeccable reliable sources told me that Jerry Southerland did not win the door prize. And after much debate, the prize for driving the furthest went to Big Alan Basye from Cumby over the objections of Little Don Illingworth from Rising Star. First off, Don said that just because Alan turned right instead of left on I-30 and drove to Texarkana before he realized his mistake, he should not get to count the extra mileage. Alan countered that the rules were not clear and he wanted the prize. Because of his argument and size, Alan got the prize. Don then went into Italicized language talk and called Alan a sorry no account SOB. When asked by Alan, Don said it stood for "Sweet Old Basye."

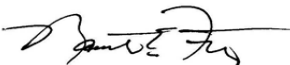
Jerry Southerland did not win the October door prize either. And neither did Paul "Chevrolet" Studebaker, Roger "Houdini" Warren, "I" Don Illingworth, Jerald D. McCord, Alton D. Fry, Charles D. Penny, Tom D. Randolph, "DC" McAfee, Walter D. Dolehite, Dennis D. Rook, Ralph D. Kirkham, Bobby D. Ayers, Ray Z. Walker and Charles D. Creech.

IMPORTANT REMINDERS

Current Beneficiaries: If you have recently had any life changing events, such as marriage, divorce, death, etc., make sure you have your beneficiary information updated with the IBEW International Office, Local Union 20, Annuity Fund, Health and Welfare Office and Credit Union.

Current Mailing Address: If you have recently moved or are about to move, please make sure you notify the Local 20 Business Office of your new mailing address. It is very important that each member keep their information current at all times with our office as well as the other Fund Offices and Credit Unions, so that you don't miss out on any important mailings. Phone numbers to each office is listed on page 5 of this publication.

Fraternally,



Karsten Frentrup
Bus. Mgr./Fin. Sec.

KF:lm
OpeiuLU#277
Afl-cio

HELPFUL PHONE NUMBERS

LU#20 Business Office: 972-263-1122 website: ibew20.org

IBEW LU#20 Federal Credit Union: 214-363-9223

IBEW LU#116 Federal Credit Union: 817-335-3658

Annuity Fund: 972- 943-9559

Delta Dental: 1-800-336-8264

VSP Vision Provider 1-800-877-7195 or visit their website at www.vsp.com

IBEW-NECA Southwestern Health and Benefit Fund: 972-980-1123 - Visit website at www.abpa.com, for forms, insurance book, hours, coverage and see if the contractor paid your benefits.

North Texas Electrical JATC: 972-266-8383 - Website: www.ntejatc.org